

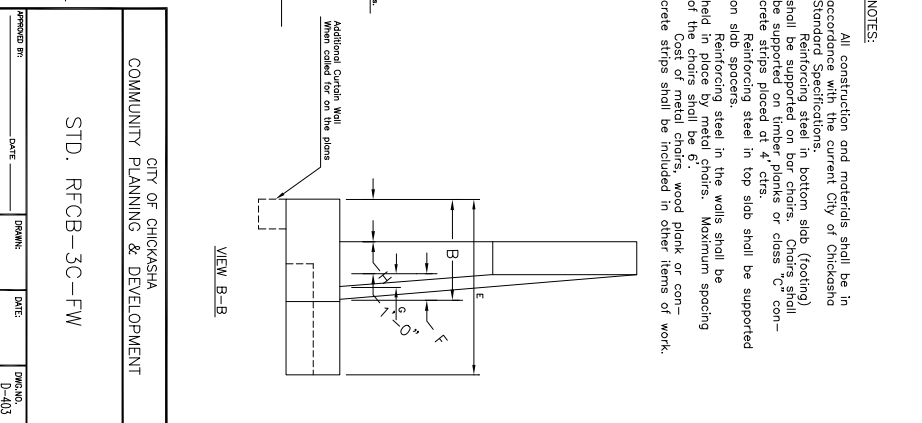
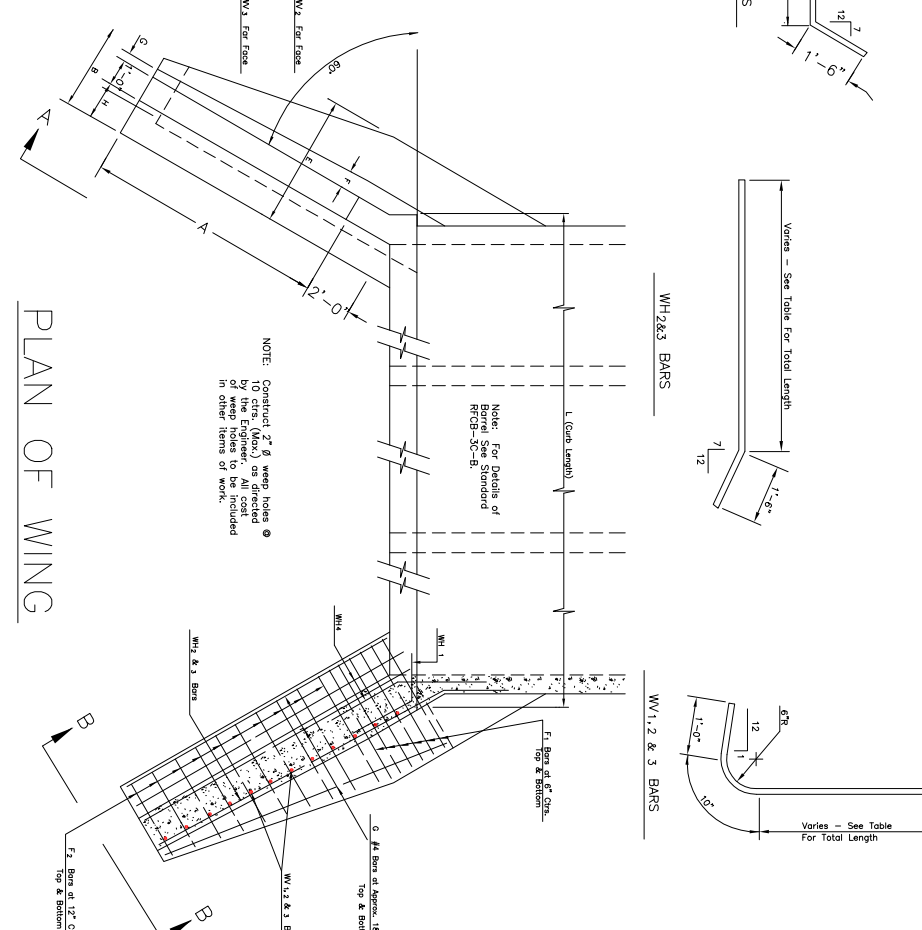
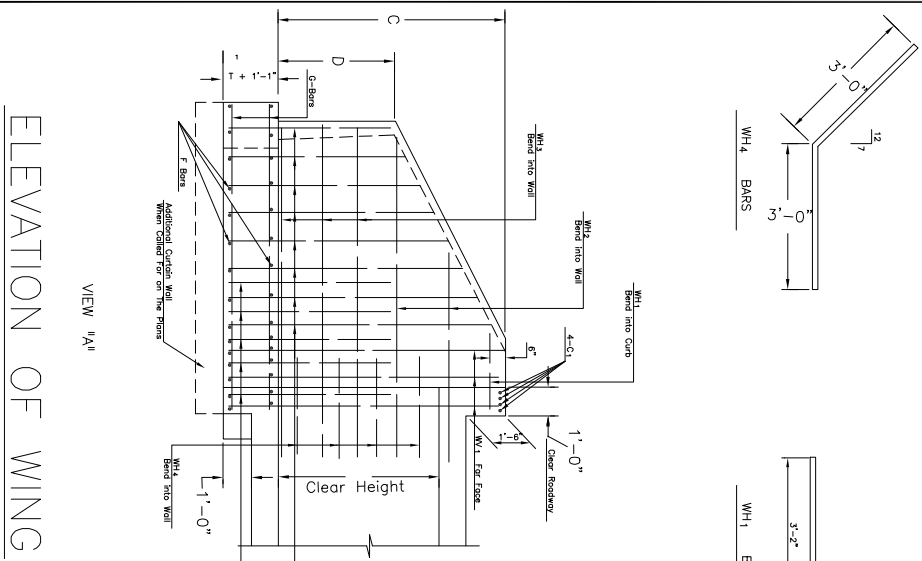
4 WINGS - 2 CURBS - 2 CUT-OFF WALLS

CLEAR SPAN	CLEAR HEIGHT	DIMENSIONS											REINFORCING											TOTAL QUANTITIES											
		A	B	C	D	E	F	G	H	L	T1	C1 Bars #/6' As Shown	F1 Bars #/4' at 6" Ctrs.	F2 Bars #/4' at 12" Ctrs.	G Bars #/18' Ctrs. As Shown	WH1 Bars #/4' at 18" Ctrs.	WH2 Bars #/4' at 18" Ctrs.	WH3 Bars #/4' at 18" Ctrs.	WH4 Bars #/4' at 12" Ctrs.	WH1 Bars #/4' at 12" Ctrs.	WH2 Bars #/4' at 12" Ctrs.	WH3 Bars #/4' at 12" Ctrs.	WH4 Bars #/4' at 12" Ctrs.	STEEL-LBS	CONC-CU. YD.										
8	5'-11"	2'-0 1/2"	6'-2 1/2"	3'-2"	4'-1"	6"	3 1/2"	1'-0"	27'-3 3/4"	8 1/2"	8 1/2"	8	27'-6"	48	3'-9"	14	2'-4" to 3'-7"	32	8'-3"	4	4'-8"	1	9'-0"	2	0'-10" to 11'-0"	24	6'-0"	12	44	8'-10"	6	44	6'-3" to 8'-6"	1,100	21.6
8	7'-4"	2'-10"	7'-2 1/2"	4'-0"	4'-2"	7"	3 1/2"	1'-0"	27'-3 3/4"	8 1/2"	8 1/2"	8	27'-6"	48	4'-9"	16	2'-4" to 3'-7"	32	8'-3"	4	4'-8"	2	9'-0"	2	0'-10" to 11'-0"	24	6'-0"	12	44	8'-10"	6	44	7'-1" to 8'-6"	1,500	28.8
8	8'-10"	3'-5"	8'-2 1/2"	4'-0"	5'-1"	8 1/2"	4 1/2"	1'-0"	27'-3 3/4"	8 1/2"	8 1/2"	8	27'-6"	48	4'-9"	16	2'-4" to 3'-7"	32	8'-3"	4	4'-8"	2	9'-0"	2	0'-10" to 11'-0"	24	6'-0"	12	44	8'-10"	6	44	7'-0" to 10'-6"	1,500	34.4
10	8'-10"	3'-5"	8'-3 3/4"	4'-0"	6'-2"	8 1/2"	4 1/2"	1'-0"	33'-3 3/4"	9 3/4"	9 3/4"	8	33'-6"	48	3'-10"	14	2'-4" to 3'-7"	32	8'-5"	4	4'-8"	1	9'-0"	2	0'-10" to 11'-0"	24	6'-0"	12	44	8'-10"	9	44	6'-5" to 8'-9"	1,200	23.6
10	8'-10"	3'-5"	10'-3 3/4"	5'-0"	6'-2"	10 1/2"	5 1/2"	1'-0"	33'-3 3/4"	9 3/4"	9 3/4"	8	33'-6"	48	5'-10"	24	3'-5" to 6'-8"	40	14'-2"	4	4'-8"	3	9'-0" to 12'-7"	3	0'-10" to 11'-0"	24	6'-0"	12	44	13'-0"	12	44	8'-0" to 12'-9"	1,600	26.7
10	14'-6"	4'-0"	12'-3 3/4"	5'-10"	7'-2"	1'-0 1/2"	5 1/2"	2'-0"	33'-1 1/4"	9 3/4"	9 3/4"	8	33'-6"	48	6'-10"	30	3'-5" to 6'-8"	40	17'-9"	4	4'-8"	4	9'-0" to 12'-7"	3	0'-10" to 11'-0"	24	6'-0"	12	44	13'-0"	15	44	8'-0" to 12'-9"	2,800	32.1
12	17'-2"	4'-6"	14'-3 3/4"	6'-2"	8'-2"	1'-2 1/2"	6 3/4"	2'-0"	34'-1 3/4"	9 3/4"	9 3/4"	8	34'-0"	48	7'-10"	36	4'-2" to 7'-8"	48	20'-0"	4	4'-8"	4	9'-0" to 12'-7"	4	0'-10" to 11'-0"	24	6'-0"	12	44	17'-0"	18	44	9'-6" to 12'-9"	3,000	37.8
12	17'-2"	4'-6"	14'-3 3/4"	6'-2"	8'-2"	1'-2 1/2"	6 3/4"	2'-0"	34'-1 3/4"	9 3/4"	9 3/4"	8	34'-0"	48	7'-10"	36	4'-2" to 7'-8"	48	20'-0"	4	4'-8"	4	9'-0" to 12'-7"	4	0'-10" to 11'-0"	24	6'-0"	12	44	17'-0"	18	44	9'-6" to 12'-9"	3,000	37.8
12	14'-6"	4'-0"	12'-3 3/4"	5'-10"	7'-2"	1'-0 1/2"	5 1/2"	2'-0"	33'-1 1/4"	9 3/4"	9 3/4"	8	33'-6"	48	6'-10"	30	3'-5" to 6'-8"	40	17'-9"	4	4'-8"	3	9'-0" to 12'-7"	3	0'-10" to 11'-0"	24	6'-0"	12	44	13'-0"	12	44	8'-0" to 12'-9"	2,800	32.1
12	17'-2"	4'-6"	14'-3 3/4"	6'-2"	8'-2"	1'-2 1/2"	6 3/4"	2'-0"	34'-1 3/4"	9 3/4"	9 3/4"	8	34'-0"	48	7'-10"	36	4'-2" to 7'-8"	48	20'-0"	4	4'-8"	4	9'-0" to 12'-7"	4	0'-10" to 11'-0"	24	6'-0"	12	44	17'-0"	18	44	9'-6" to 12'-9"	3,000	37.8
14	20'-6"	4'-11"	16'-3 3/4"	7'-5"	9'-2"	1'-4 1/2"	6"	2'-6"	40'-3 3/4"	11 1/2"	11 1/2"	8	40'-0"	56	8'-10"	42	4'-2" to 7'-8"	56	23'-7"	4	4'-8"	5	9'-0" to 12'-7"	4	0'-10" to 11'-0"	24	6'-0"	12	44	19'-1"	21	44	10'-0" to 13'-11"	5,600	134.0

NOTE: QUANTITIES SHOWN INCLUDE CURB, WINGS AND CUT-OFF WALLS FOR ONE UPSTREAM & ONE DOWNSTREAM END OF BARREL.

NOTES:

All construction and materials shall be in accordance with the current City of Chickasha Standard Specifications.
 Reinforcing steel in bottom slab (footing) shall be supported on concrete anchors. Steel will be supported on concrete anchors or cast-in-place concrete strips placed at 4' ctrs.
 Reinforcing steel in top slab shall be supported on slab spacers.
 Reinforcing steel in the walls shall be held in place by metal chairs. Maximum spacing of cast-in metal chairs, wood spacers or concrete strips shall be included in other items of work.



CITY OF CHICKASHA
 COMMUNITY PLANNING & DEVELOPMENT
 STD. RFCB-3C-FW
 DRAWN BY: _____ DATE: _____
 CHECKED BY: _____ DATE: _____
 DESIGNED BY: _____ DATE: _____